

STRIKE II  
**STRIKEOUT II**



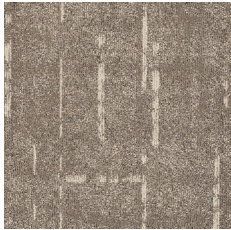
STRIKEOUT II TUNGSTEN 2-800CB

au 1800 150 554  
nz 0800 150 555  
[signaturefloors.com.au](http://signaturefloors.com.au)  
[signaturefloors.co.nz](http://signaturefloors.co.nz)

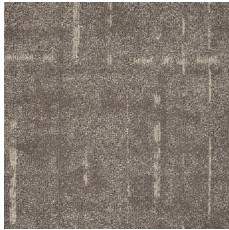
*Signature*

**STRIKEOUT II**

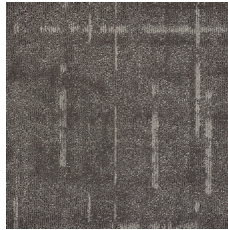
**STRIKE II**



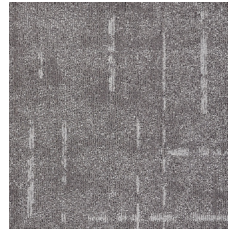
TUNGSTEN  
2-800CB



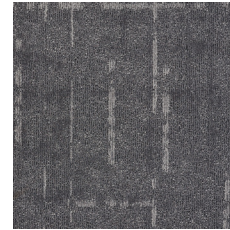
SODIUM  
2-700CB



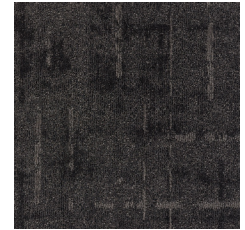
NICKEL  
2-600CB



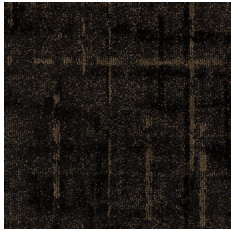
RHODIUM  
2-500CB



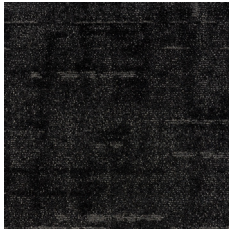
SILICA  
2-900CB



GALLIUM  
2-100CB



CLAY  
2-200CB



GRAPHITE  
2-300CB



CHARCOAL  
2-400CB

**SPECIFICATIONS**

<b>Collection</b>	Strike II
<b>Product</b>	StrikeOut II
<b>Product Category</b>	Carpet Tile
<b>Construction</b>	Textured Loop & Tip Shear
<b>Yarn/Fibre</b>	Solution Dyed Nylon
<b>Pile Weight</b>	612g/m <sup>2</sup> (18oz)
<b>Pile Height</b>	4mm
<b>Gauge</b>	1/12
<b>Tile Size</b>	500 x 500mm
<b>Total Thickness</b>	10mm
<b>Total Weight</b>	4.4kg/m <sup>2</sup>
<b>Carton Size</b>	5m <sup>2</sup>

**CUSTOM OPTIONS**

<b>Comfi Bak<sup>®</sup></b>	In stock
<b>Flexi Bak<sup>®</sup></b>	50m <sup>2</sup> minimum
<b>Thermo Bak<sup>®</sup></b>	50m <sup>2</sup> minimum
<b>Shapes by Signature<sup>®</sup></b>	50m <sup>2</sup> minimum

**INSTALLATION METHODS**



ASHLAR



QUARTER TURN



BRICK



DIRECTIONAL

**PERFORMANCE**

<b>Dimensional Stability</b>	<0.15%
<b>Backing</b>	Comfi Bak <sup>®</sup>
<b>Electrostatic Propensity</b>	<3.0kv
<b>Recommended Adhesive</b>	RLA Polymers GS300
<b>ACCS Rating</b>	Commercial Extra Heavy Duty
<b>Warranty</b>	15 Year
<b>Fire Rating ISO 9239.1</b>	5.2kw/m <sup>2</sup> Critical Radiant Flux Suitable all areas
<b>Stain/Soil</b>	Ultra Gard

**SUSTAINABILITY**

GreenTag<sup>®</sup> GreenRate Level A  
EPDs And Declare Labels  
WELL & LBC Eligible

**TECHNICAL DOCUMENTS**

[Technical Information Guide](#)  
[Care and Maintenance Guide](#)  
[Warranty Guide](#)

Our manufacturing process ensures no two tiles are the same. Please note that there may be batch variations from different dye lots.